

# Network Access Chamber Systems





# STAKKAbox™ Modula

The STAKKAbox™ Modula range of network access chamber systems provide a lightweight, structural, solution for use within multiple sector applications. The Modula chamber system has been designed to significantly reduce the costs of network access chamber installations through time savings.

Due to its twinwall design, individual sections are lightweight meaning they can be manually lifted and stacked on top of each other to reach the specified height required. The STAKKAbox™ Modula chamber system also comes with a wide range of X-TRAS™ chamber accessories and AX-S™ access covers to provide a complete network access system.

## Contents

<b>STAKKAbox™ Modula</b>	<b>02</b>
How it Works	04
How it's Built	06
Measuring a Chamber	08
Chamber Sizes	09
Chamber Accessories	10
AX-S™ Covers	11
Industry Experts	12





# How it Works

STAKKAbox™ Modula is manufactured in 150mm deep sections that stack on top of each other to reach the desired depth. Each ring section is castellated to positively interlock with the unit above and below.

## Modula Product Benefits

### Variability in Size

STAKKAbox™ Modula offers a wide range of chamber dimensions up to 900x900mm. See page 9 for all standard STAKKAbox™ Modula chamber sizes available.

### Lightweight

Due to the sectional, twinwall design all Modula 150mm sections are under 11kg in weight, making it suitable for single operative lift under manual handling regulations.

### Material

STAKKAbox™ Modula from Polypropylene (PP) which possesses excellent strength to weight properties.

### Fast and Easy to Install

Modula chambers are significantly faster to install than conventional alternatives, with complete installations typically taking up to one hour. With the added flexibility of creating duct entries on-site, in-situ with standard hole saw or drill. Modula also has the added flexibility of being able to be cut around and built over existing networks.



### Strength

Modula has been extensively tested to ensure that it meets the loading requirements up to B125 in a variety of installation environments. The loadings match the vertical loading categories recognized by EN124 gully tops and access tops for vehicular and pedestrian users.

### Pre-drilled for ease of Connection

Easily knocked out duct caps on all 4 sides of each Modula ring section allow for quick installation at different depths and remove the need for power tools de-skilling the installation for the contractor.

### Smooth Outer Wall with Lip to 'Key In'

Smooth Outer Wall with Lip to 'Key In': Gaps in the outer wall will negatively impact the effectiveness of compaction around the chamber system. STAKKAbox™ chambers have a smooth outer wall and an outer lip which keys into the backfill.

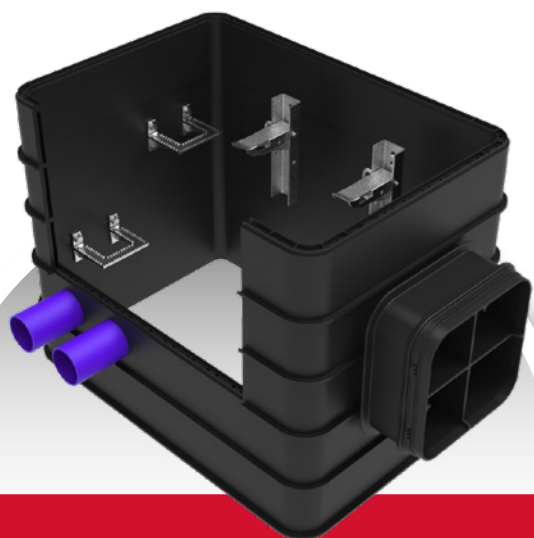
Duct entries can easily be drilled on site or can be pre-fitted to give consistent spacing and internal wall finish every time



## How it's Built

STAKKAbox™ Modula chambers are formed by combining and interlocking ring sections, that are stacked one on top of each other to reach the specified depth required on-site.

The Modula range then allows installers to simply place, connect up tubes or ducts, backfill and walk away.



Cable management accessories are easily fitted to the Modula's internal sidewall for keeping cables tidy within the chamber.

Built by stacking ring sections to the required depth, each Modula part weighs under 11kg, making it suitable for a single person lift under manual handling regulations. X-TRAS™ cable management, MULTIduct™ Spigots and duct entries provide a complete chamber systems solution for a range of sector applications.

### Rapid and Easy Installation

#### Step 1:

Remove any soft areas and place the 1st ring section into the desired location ensuring it is level.



#### Step 2:

Continue building each ring section. Interlocking them on top each other by pressing a ring section firmly onto another until the locking into place.



#### Step 3:

Once construction is complete install the required chamber accessories such as steps, duct entries and access cover. A range of cover options can be found on page 11.

#### Step 4:

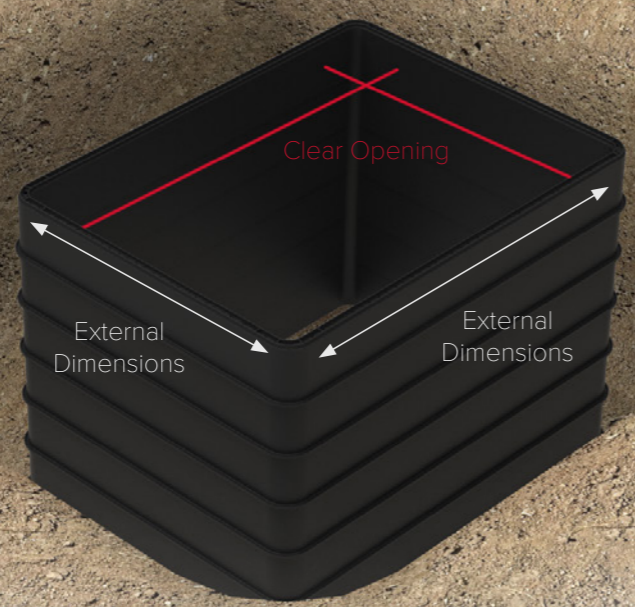
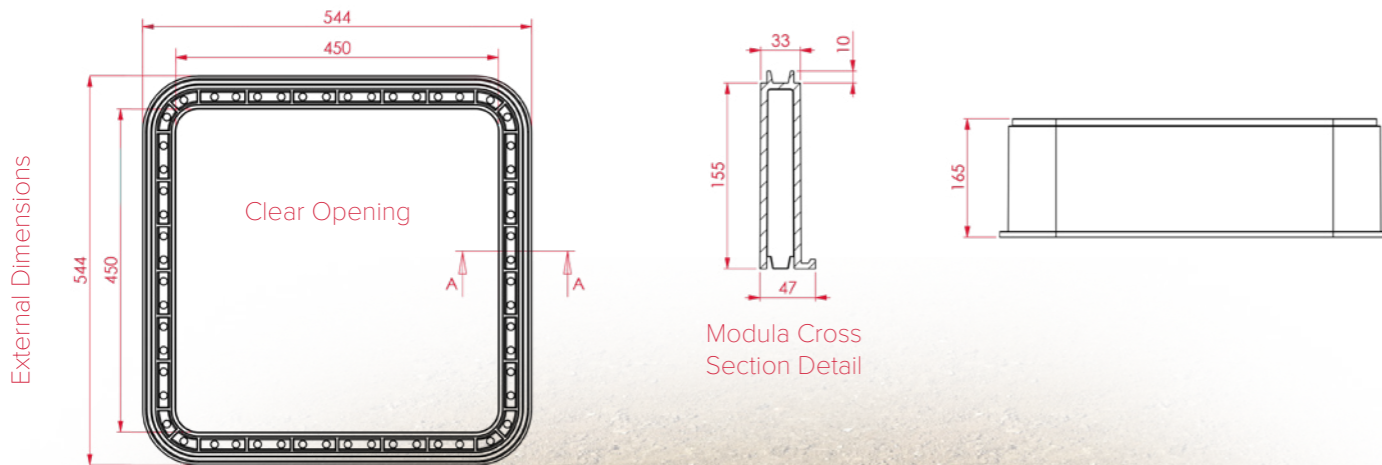
Complete installation with backfill and surrounding surface material specified.





# Measuring a Chamber

Network access chambers sections are measured by the measurement taking from inside of the chamber. Attention should also be paid to the external dimensions when deciding whether the network access chamber will fit into the area required.



# Chamber Sizes

Clear Opening		Externals Dimensions	
Length (mm)	Width (mm)	Length (mm)	Width (mm)
150	150	243	243
300	300	393	393
450	300	543	393
450	450	543	543
600	300	693	939
600	450	693	543
600	600	693	693
675	300	768	393
675	600	768	693
675	675	768	768
700	300	793	393
700	400	793	493
750	250	843	343
750	300	843	393
750	600	843	693
750	675	843	768
750	750	843	843
900	300	993	393
900	450	993	543
900	600	993	693
900	750	993	843
900	900	993	993

Please contact a Cubis sales representative to discuss cover dimensions and loading options for the various chamber sizes.





# Chamber Accessories

Using Cubis access chamber system accessories can help save even more time. Our chamber options & accessories range allows installers to simply place, connect up tubes or ducts, backfill and walk away.

### 1. X-TRAS™ Access

Chambers deeper than 600mm will usually require steps or ladders for access. We supply high quality bolt-on steps to suit customer requirements.

### 2. X-TRAS™ MULTIduct™ Spigot

MULTIduct™ spigots can be built into assembled chambers so that interface can be completed faster on site.

### 3. X-TRAS™ Cable Management

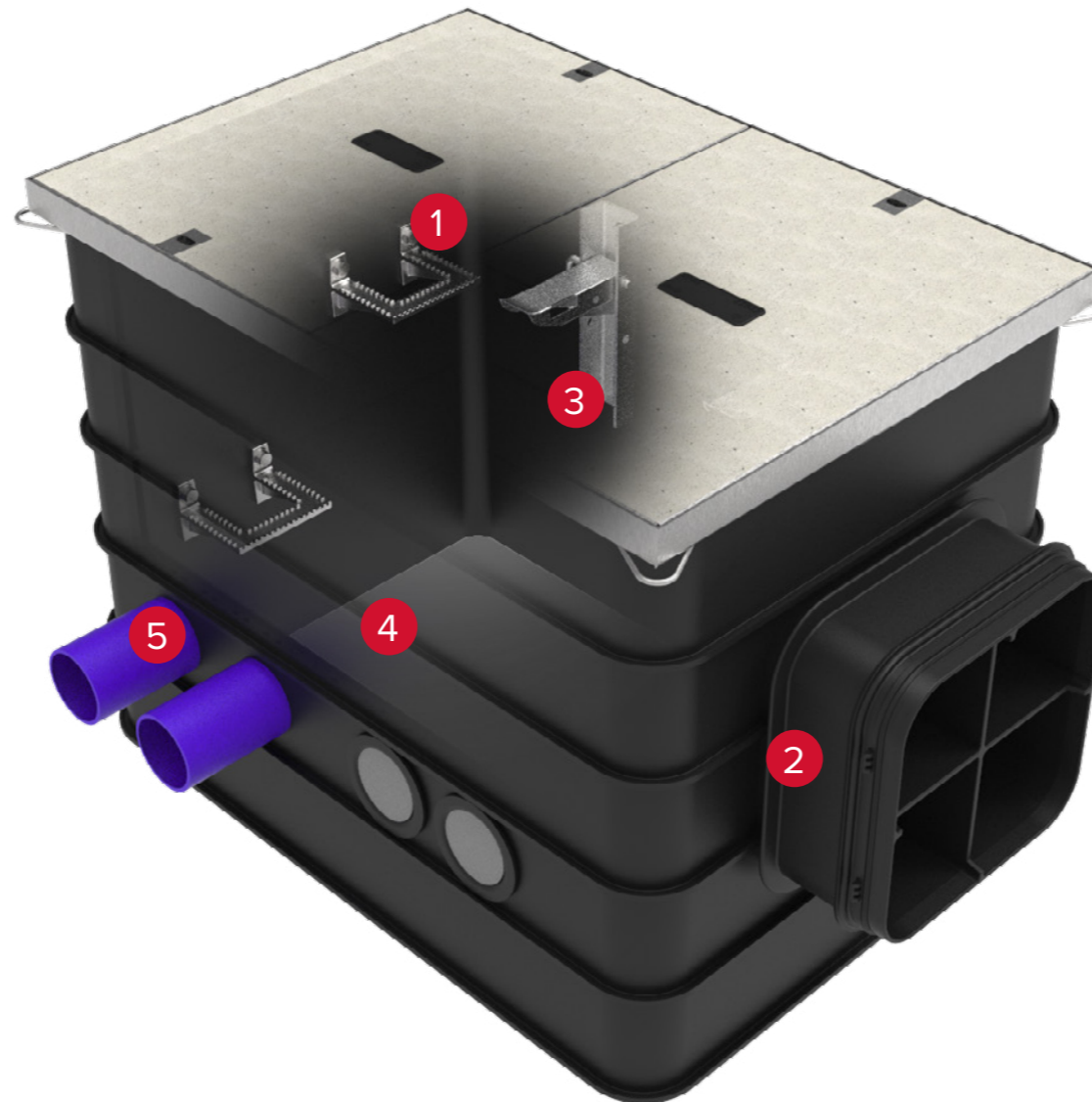
Based upon Openreach and France Telecom accredited galvanised steel cable and joint management and our own high-strength plastic fittings, these accessories will keep cables dressed perfectly within the chamber.

### 4. X-TRAS™ Bases

These are securely fitted to a ring section or bottom of a chamber to provide a clean and anti-slip finish.

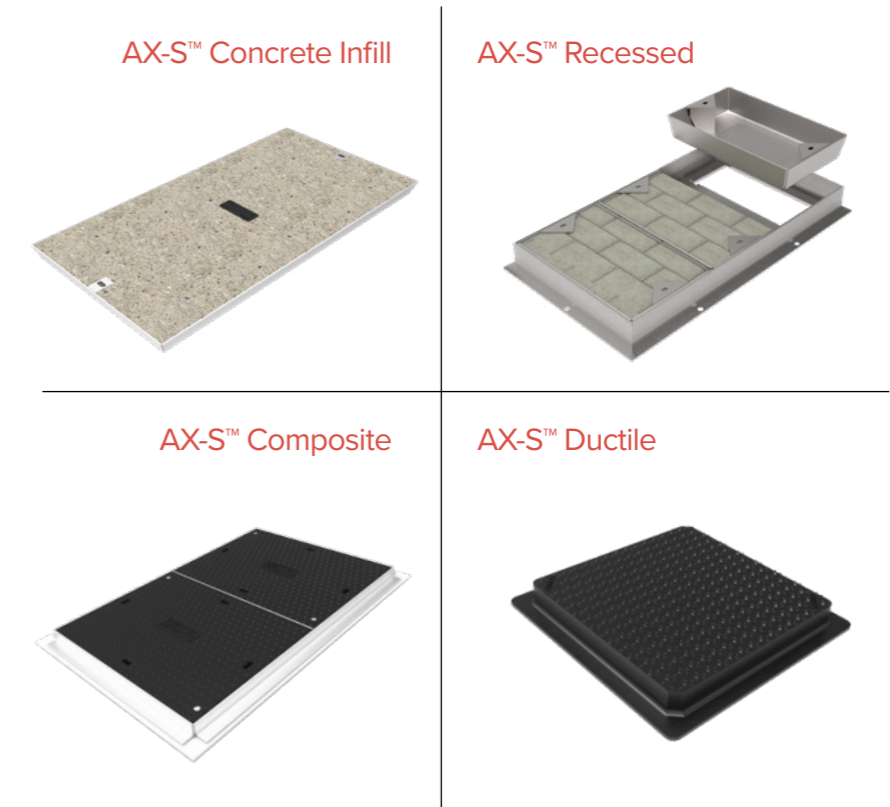
### 5. X-TRAS™ Duct Entry

Ducts, tubes and pipes come in many size and wall configurations and we have developed fittings which provide for the simple transit of these into our chambers. Whilst duct entries can always be made very easily on site, our pre-fit service gives consistent spacing and internal wall finish every time.



The Cubis AX-S™ range of access covers provide customers with a complete underground network access system as they are designed and manufactured from a range of materials to complement our chamber ranges.

The AX-S™ range can be tailored to meet specified loading requirements from pedestrian up to carriageway duty and are available in a wide range of clear opening dimensions and depths.



### Options

- Bespoke customer badging
- Various frame depths and types
- Security options
- Large range of sizes available





# Industry Experts

Cubis Systems products are innovative, lightweight and significantly reduce costs of in-situ construction through time savings. The Cubis integrated systems approach offers clients a complete range of access chambers, access cover and cable protection systems. These products have been installed worldwide in Telecoms, Highways, Rail/ Light Rail, Water and Power & Energy applications. Cubis' products are used within many different applications within each sector from buried cable routes to network access solutions.

## Access Chamber System:

Cubis' STAKKAbOX™ access chamber systems are adaptable to the unique requirements of each site. This means ordinary site tools can be used to retrofit chamber systems around existing networks by drilling duct entries. The seamless integration across the Cubis product range enables the construction of bespoke systems that significantly reduce costs of access chamber construction through time savings. Cubis' chamber options & accessories range allows installers the ability to simply place, connect ducts, backfill and walk away.

## Cable Protection:

Cubis' cable protection systems MULTIduct™, PROtrough, RAILduct™ and MM RAILduct™ offer innovative, lightweight, secure cable protection systems that have been used worldwide in a range of sectors and applications. Cubis' cable protection systems comprise of 1 metre long units that connect together allowing for rotation in the units to deal with turns, elevations, natural curvature and other obstacles. Due to their light weight properties Cubis' cable protection systems offer significant health and safety advantages over traditional systems.

## AX-S™ Access Covers:

The Cubis AX-S™ range of access covers provide customers with a complete underground network system, designed and manufactured from a range of materials to complement our access chamber systems. The AX-S™ range can be tailored to meet specified loading requirements from pedestrian up to carriageway duty and are available in a wide range of clear opening dimensions, depths, security features, frame types and bespoke badging. The Cubis AX-S™ range consists of concrete infill, recessed, composite, ductile iron and steel fabricated.







## Driven by Innovation

Innovation is the engine that has driven Cubis Systems to its position as global leader in the design and manufacture of access chambers and cable ducting systems.

Inspired by innovation, we have developed quality products that replace traditional construction materials like bricks and concrete. Our lightweight plastics, incorporating intelligent design features, are used in the construction of infrastructure networks for the rail, telecoms, water, construction and power markets worldwide. Cubis products can be installed much faster than traditional methods and therefore save our customers both time and money.

Cubis manufactures the preformed STAKKAbox™ network access chamber systems, the AX-S™ access covers range, a MULTIduct™ multiple duct system and the PROtrough cable troughing system at sites throughout the UK and Ireland. These innovative products are exported to more than 25 countries throughout the world.

At Cubis we are committed to ongoing innovation and dedicated to delivering absolute product quality, detailed technical customer support and the highest levels of customer satisfaction.

## Contact us:

Head Office:  
4 Silverwood Industrial Estate,  
Lurgan, Co. Armagh,  
BT66 6LN,  
Northern Ireland

Telephone: +44 (0)28 38 313 100  
Email: [info@cubis-systems.com](mailto:info@cubis-systems.com)

